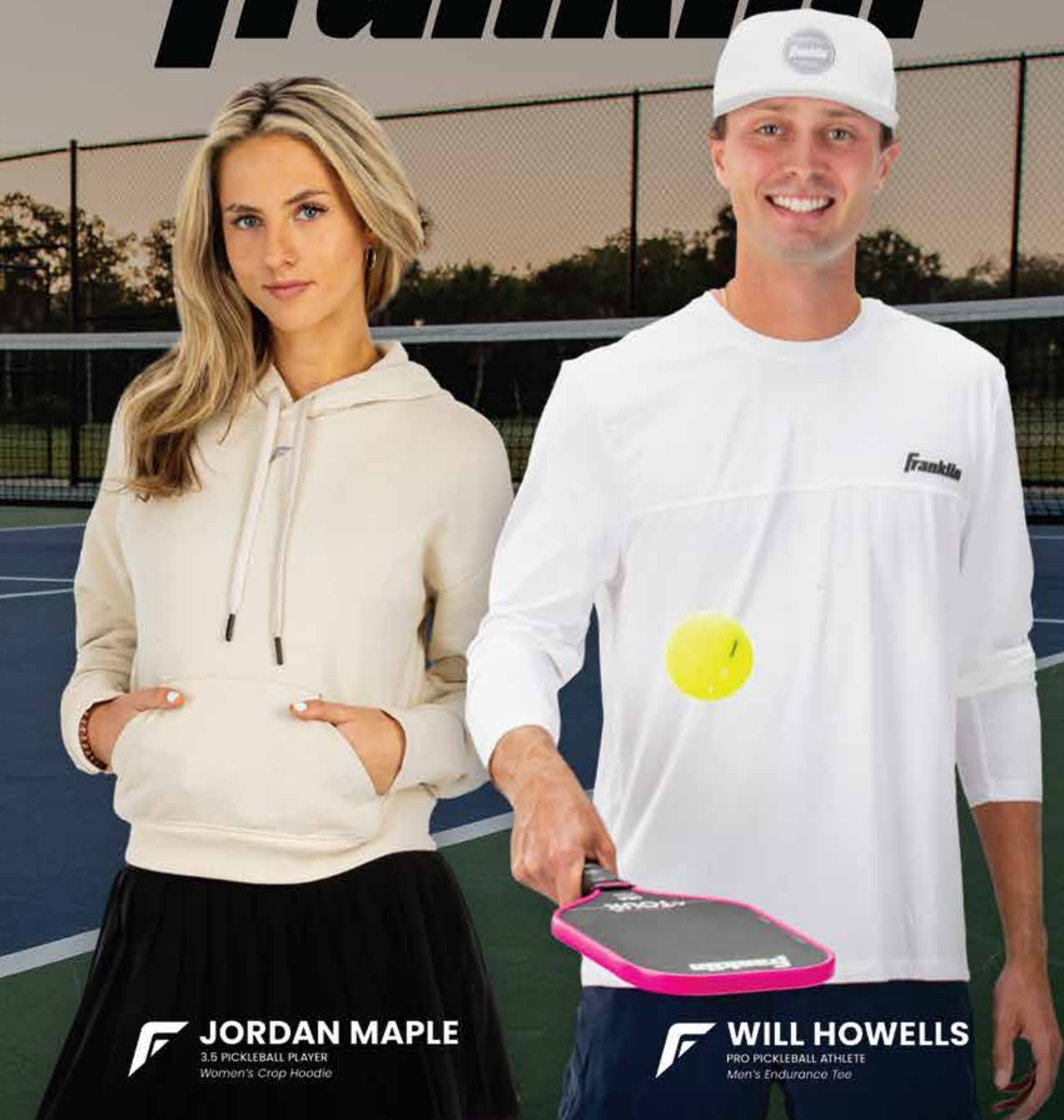


APPAREL 2025

Franklin

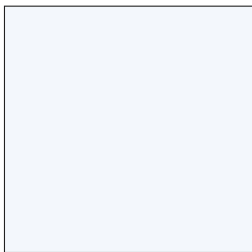


 **JORDAN MAPLE**
3.5 PICKLEBALL PLAYER
Women's Crop Hoodie

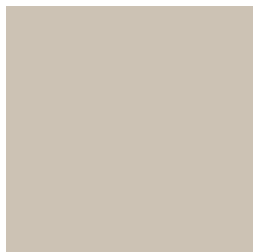
 **WILL HOWELLS**
PRO PICKLEBALL ATHLETE
Men's Endurance Tee

COLLECTION COLOR PALETTE

Men's Palette



PANTONE
11-0601 TCX
White



PANTONE
13-0401 TCX
Oatmeal



PANTONE
19-4203 TCX
Black



PANTONE
18-0601 TCX
Charcoal



PANTONE
19-3932 TCX
Navy



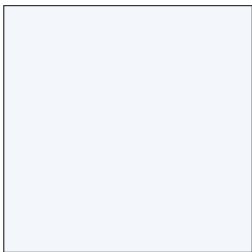
PANTONE
16-4031 TCX
Cornflower Blue



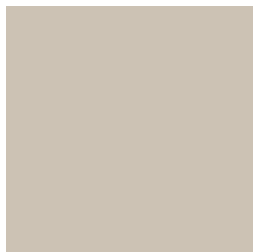
PANTONE
14-4506 TCX
Ether

COLLECTION COLOR PALETTE

Women's Palette



PANTONE
11-0601 TCX
White



PANTONE
13-0401 TCX
Oatmeal



PANTONE
19-4203 TCX
Black



PANTONE
18-0601 TCX
Charcoal



PANTONE
17-1842 TCX
Azalea



PANTONE
16-4031 TCX
Cornflower Blue



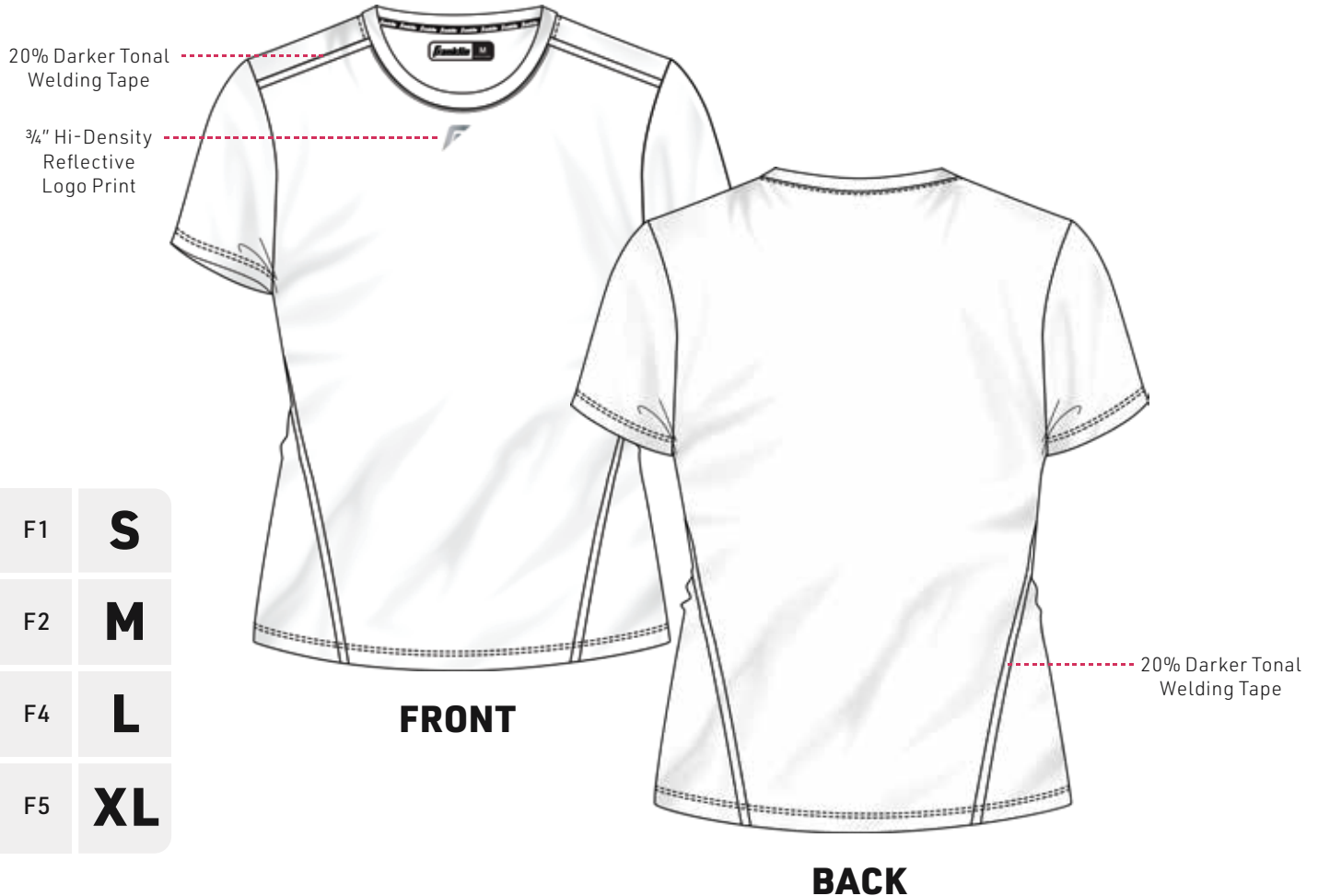
PANTONE
14-4506 TCX
Ether

WOMEN'S COLLECTION



WOMEN'S ACTIVE PERFORMANCE TOP

JERSEY: 88% POLYESTER 12% SPANDEX. 190GSM W/ WICKING, SOFT HAND FEEL.



F1	S
F2	M
F4	L
F5	XL



WHITE



AZALEA



CORNFLOWER FADE



ETHER



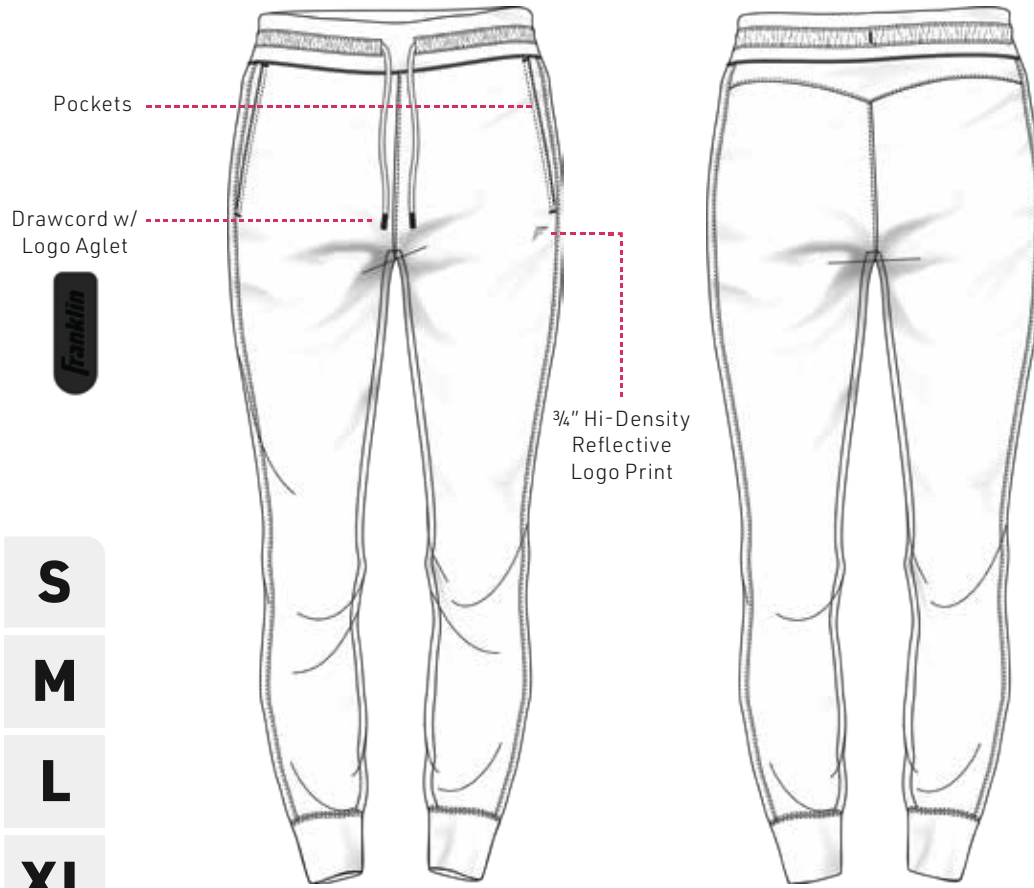
BLACK

WHITE (11-0601TCX) 38608C1FX	AZALEA (17-1842TCX) 38608C2FX	CORNFLOWER FADE (16-4031TCX) 38608C3FX	ETHER (14-4506TCX) 38608C4FX	BLACK (19-4203TCX) 38608C5FX



WOMEN'S HIGH-PERFORMANCE JOGGER

74% POLYESTER 26% SPANDEX. 280GSM. INTERLOCK W/WICKING, ANTI-BACTERIAL



Pockets

Drawcord w/
Logo Aglet



3/4" Hi-Density
Reflective
Logo Print

F1	S
F2	M
F4	L
F5	XL

FRONT

BACK



BLACK



CORNFLOWER BLUE



OATMEAL

BLACK (19-4203TCX)
38615C1FX



CORNFLOWER (16-4031TCX)
38615C2FX



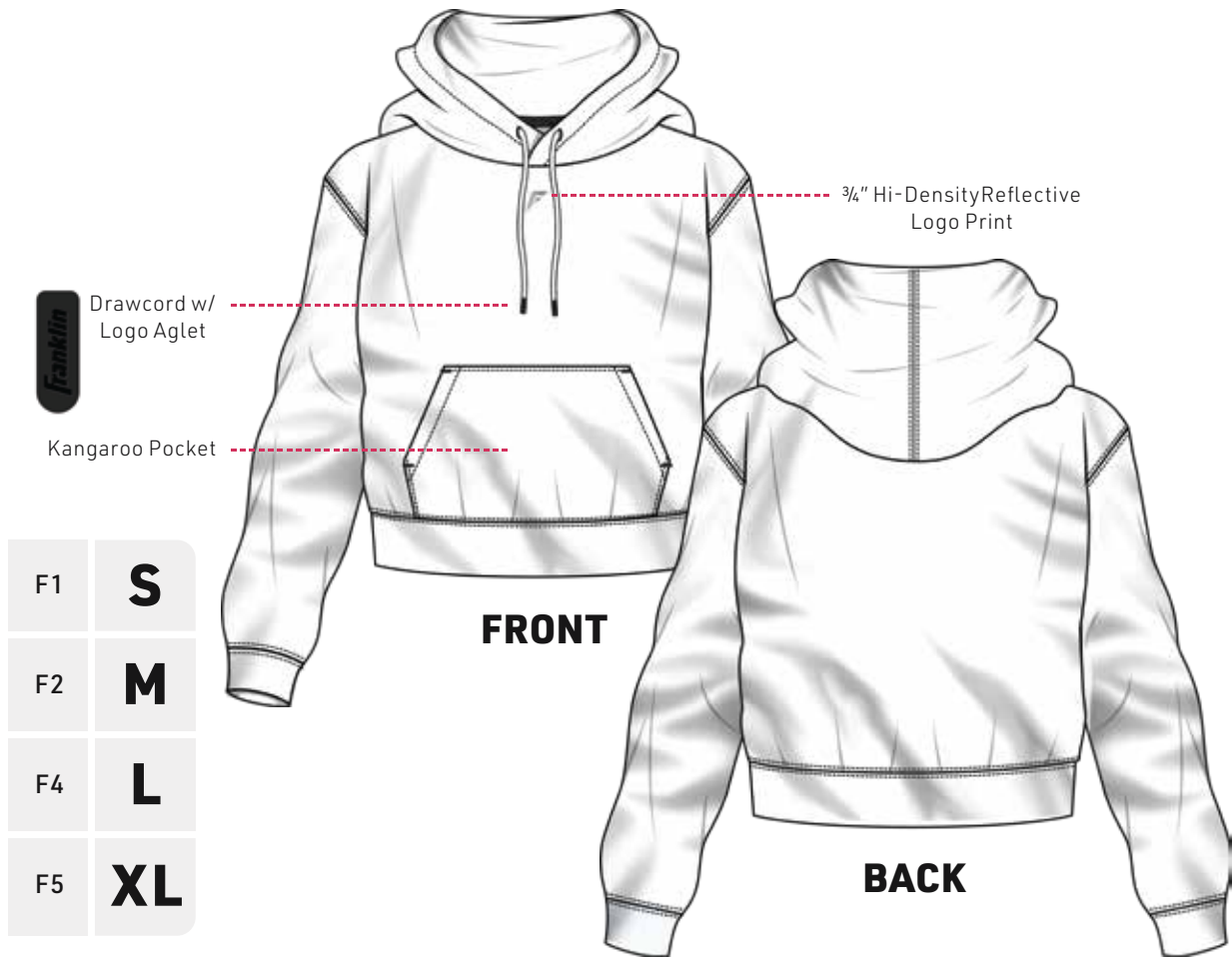
OATMEAL (13-0401TCX)
38615C3FX





WOMEN'S CROP HOODIE

JERSEY: 88% POLYESTER 12% SPANDEX. 190GSM. W/WICKING, SOFT HAND FEEL



BLACK



CORNFLOWER BLUE



OATMEAL

BLACK (19-4203TCX)
38616C1FX



CORNFLOWER (16-4031TCX)
38616C2FX



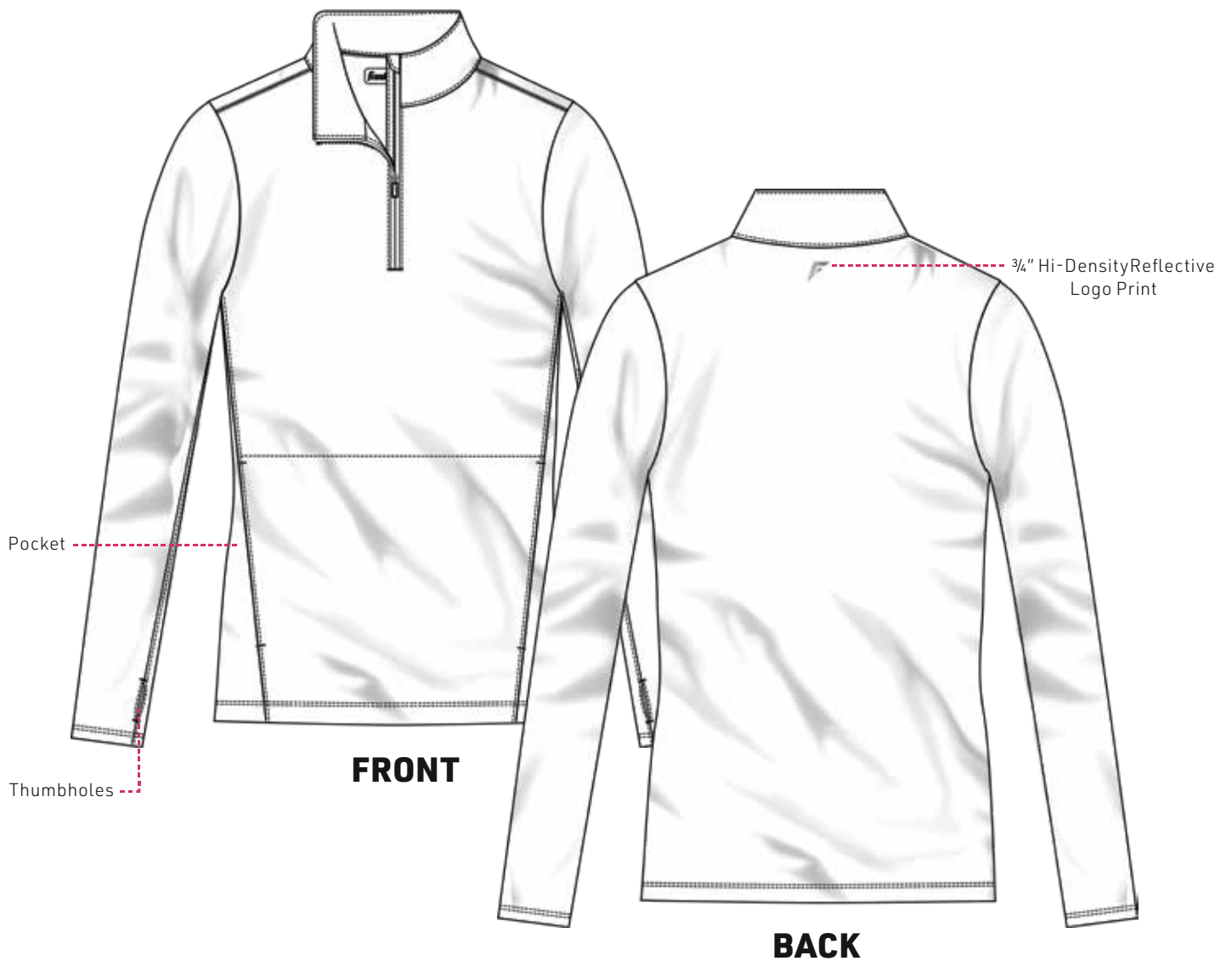
OATMEAL (13-0401TCX)
38616C3FX





WOMEN'S 1/4 ZIP PULLOVER

JERSEY: 88% POLYESTER 12% SPANDEX. 190GSM. W/WICKING, SOFT HAND FEEL





BLACK



CORNFLOWER



WHITE

F1

S

F2

M

F4

L

F5

XL

BLACK (19-4203TCX)
38617C3FX



CORNFLOWER (16-4031TCX)
38617C2FX



WHITE (11-0601TCX)
38617C1FX



WOMEN'S ACTIVE PLEATED SKIRT

90% POLYESTER 10% SPANDEX. 110 GSM. STRETCH WOVEN W/ MOISTURE MANAGEMENT & ANTI-BACTERIAL PROPERTIES INNER SHORT: 74% POLYESTER 26% SPANDEX. 190 GSM. INTERLOCK W/ WICKING, ANTI-BACTERIAL

SHIPS IN MAY

Tonal Logo
Waistband Elastic



3/4" Hi-Density Reflective
Logo Print

F1	S
F2	M
F4	L



WHITE



BLACK

WHITE (11-0601TCX)
38614C1FX



BLACK (19-4203TCX)
38614C2FX



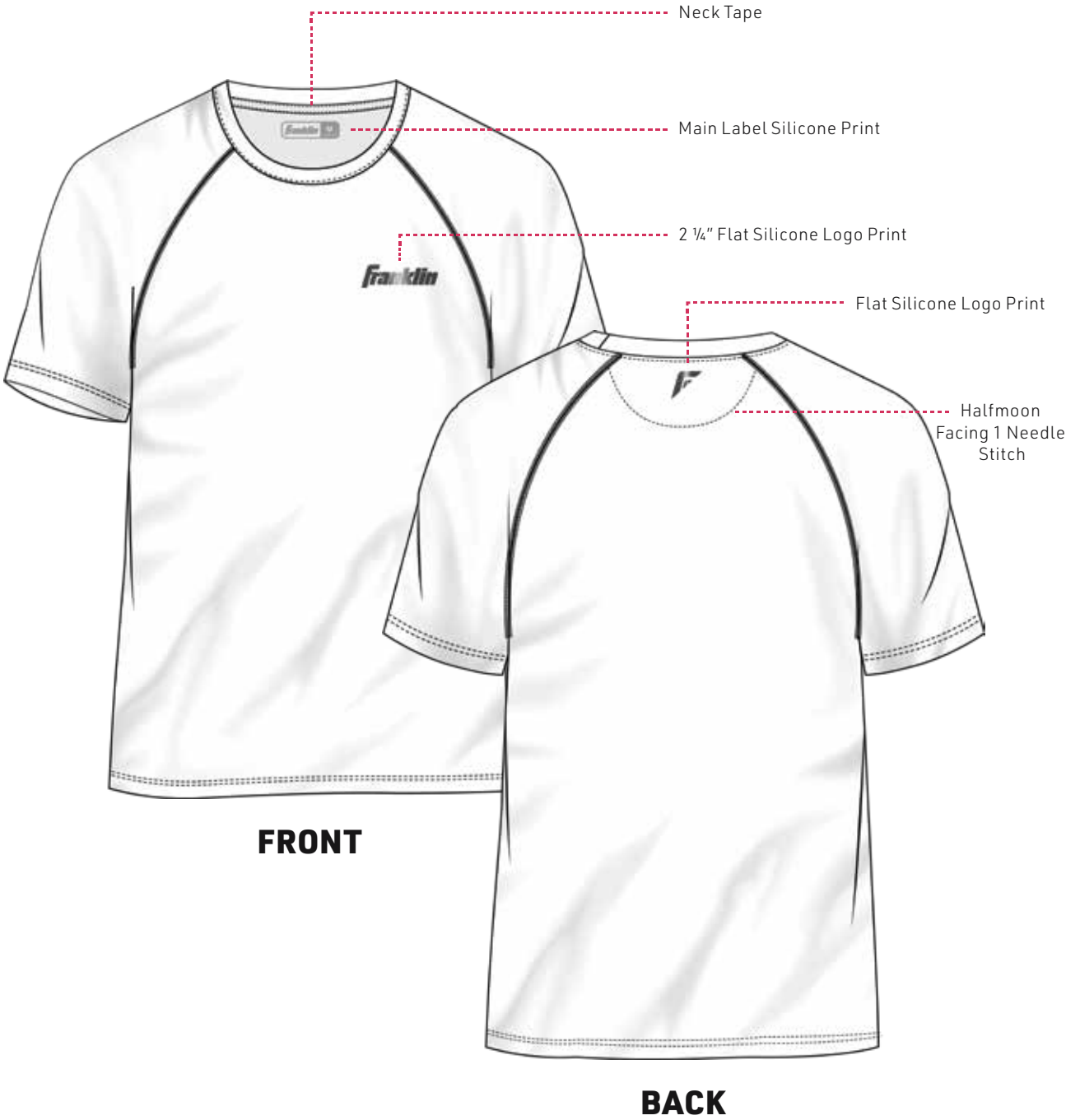


MEN'S COLLECTION



MEN'S PERFORMANCE TEE

JERSEY: 88% POLYESTER 12% SPANDEX. 190GSM. W/ WICKING, SOFT HAND FEEL





WHITE



NAVY



OATMEAL HTR



CORNFLOWER



CHARCOAL HTR

F1	S
F2	M
F4	L
F5	XL

WHITE (11-0601TCX)

38600C1FX



NAVY (19-3932TCX)

38600C2FX



OATMEAL HTR

38600C3FX



CORNFLOWER (16-4031TCX)

38600C4FX



CHARCOAL HTR

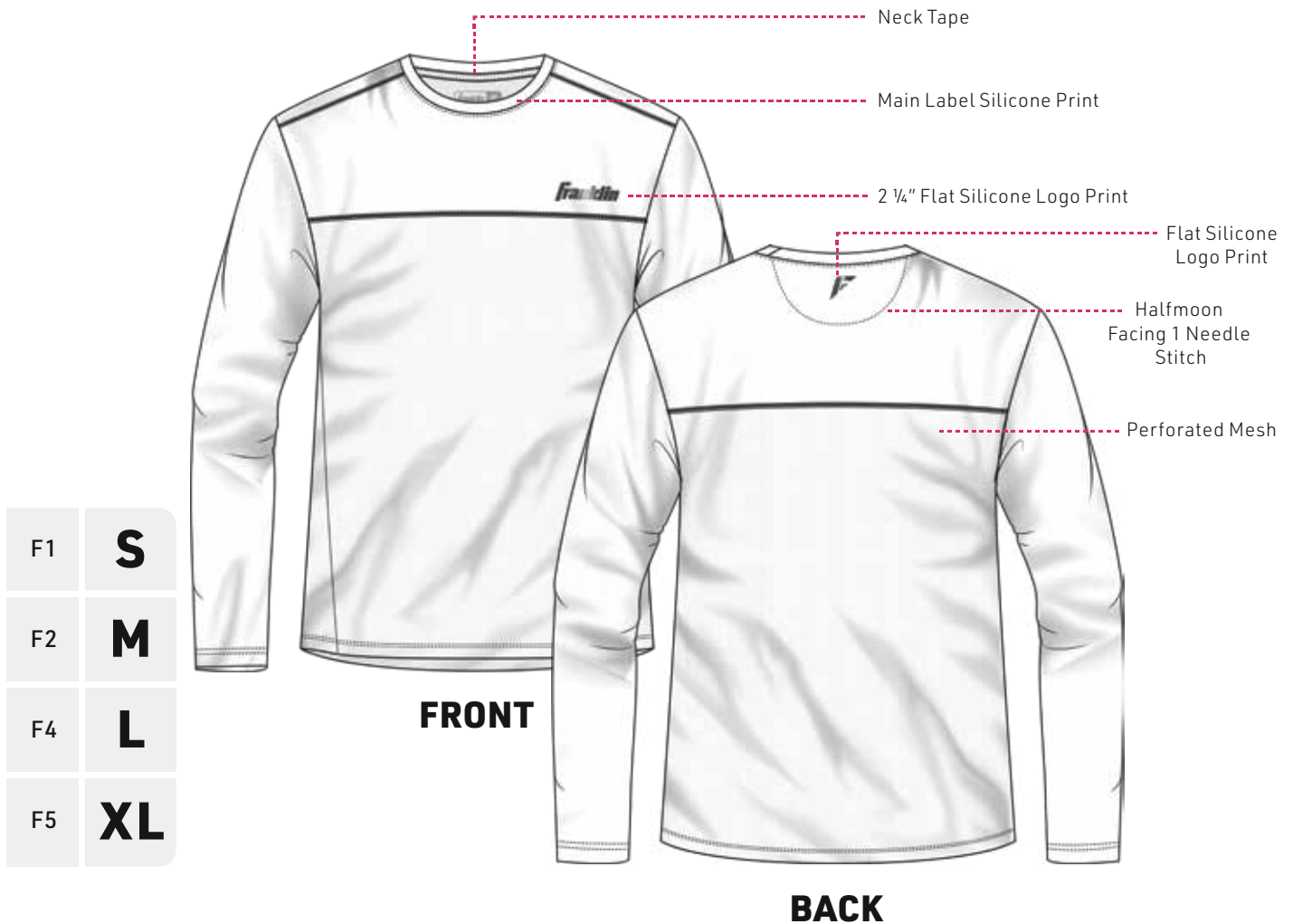
38600C5FX



MEN'S ENDURANCE TEE

JERSEY: 88% POLYESTER 12% SPANDEX. 190GSM. W/ WICKING, SOFT HAND FEEL

MESH: 88% POLYESTER 12% SPANDEX. 190GSM. W/ WICKING, SOFT HAND FEEL



WHITE

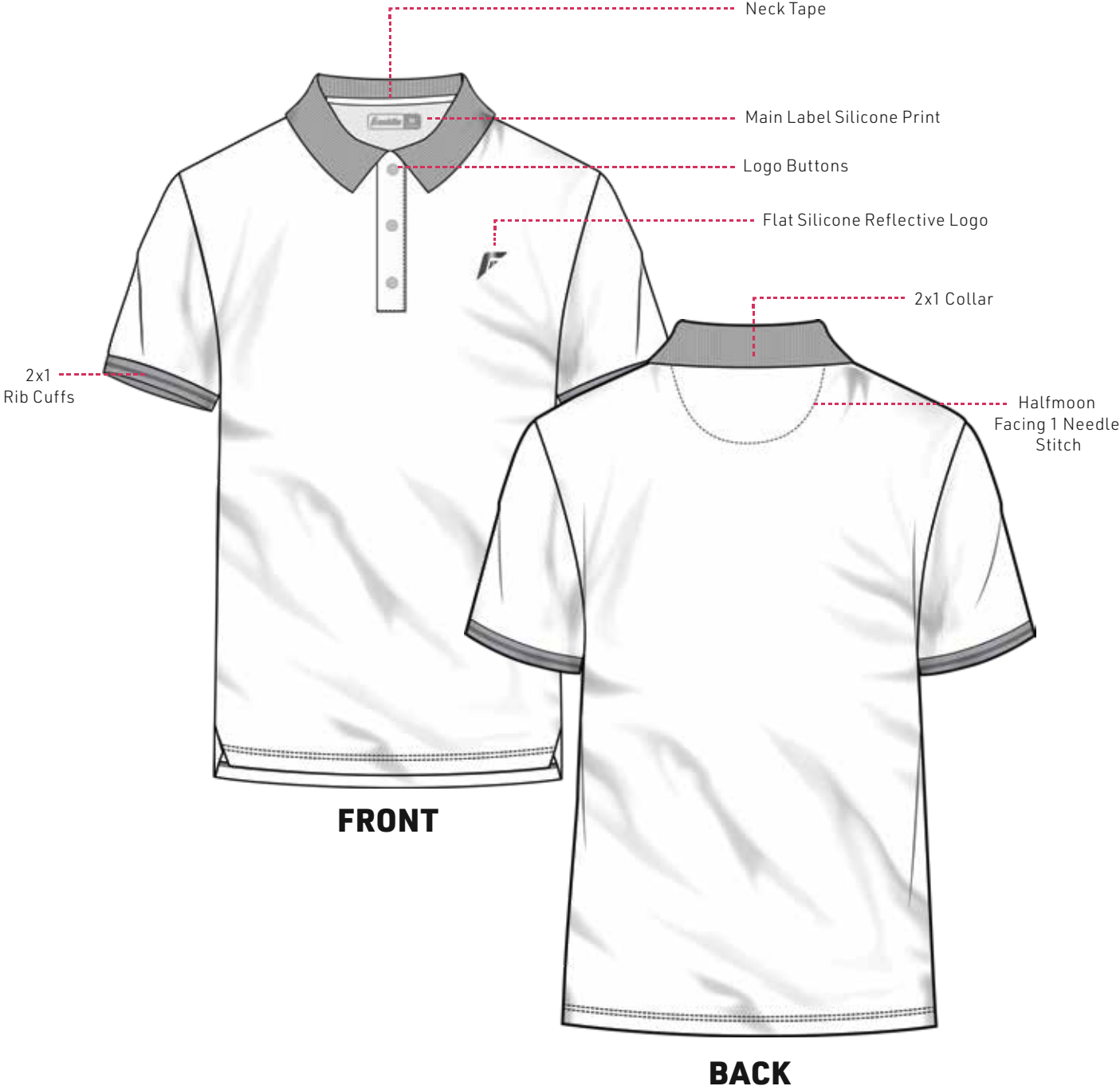
WHITE (11-0601TCX)
38601C1FX





MEN'S ULTIMATE POLO

JERSEY: 88% POLYESTER 12% SPANDEX. 190GSM. W/ WICKING, SOFT HAND FEEL





WHITE



OATMEAL



BLACK

F1	S
F2	M
F4	L
F5	XL

WHITE (11-0601TCX)
38602C1FX



OATMEAL (13-0401TCX)
38602C2FX

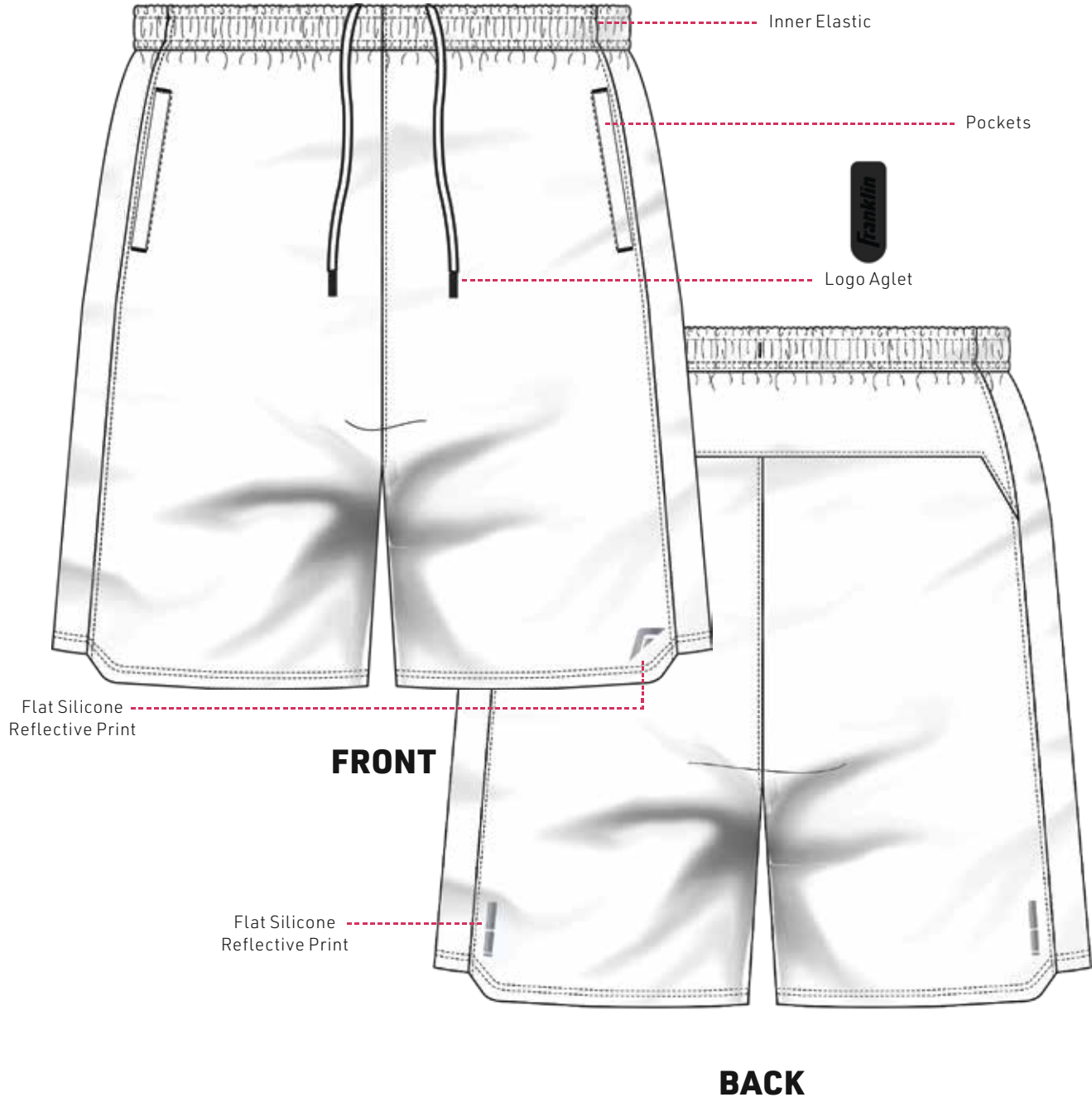


BLACK (19-4203TCX)
38602C3FX



MEN'S NITE RUNNER SHORT

FABRIC: 95% POLYESTER 5% SPANDEX. 120GSM. STRETCH WOVEN W/ MOISTURE MANAGEMENT & ANTIBACTERIAL PROPERTIES





NAVY

F1

S

F2

M

F4

L

F5

XL

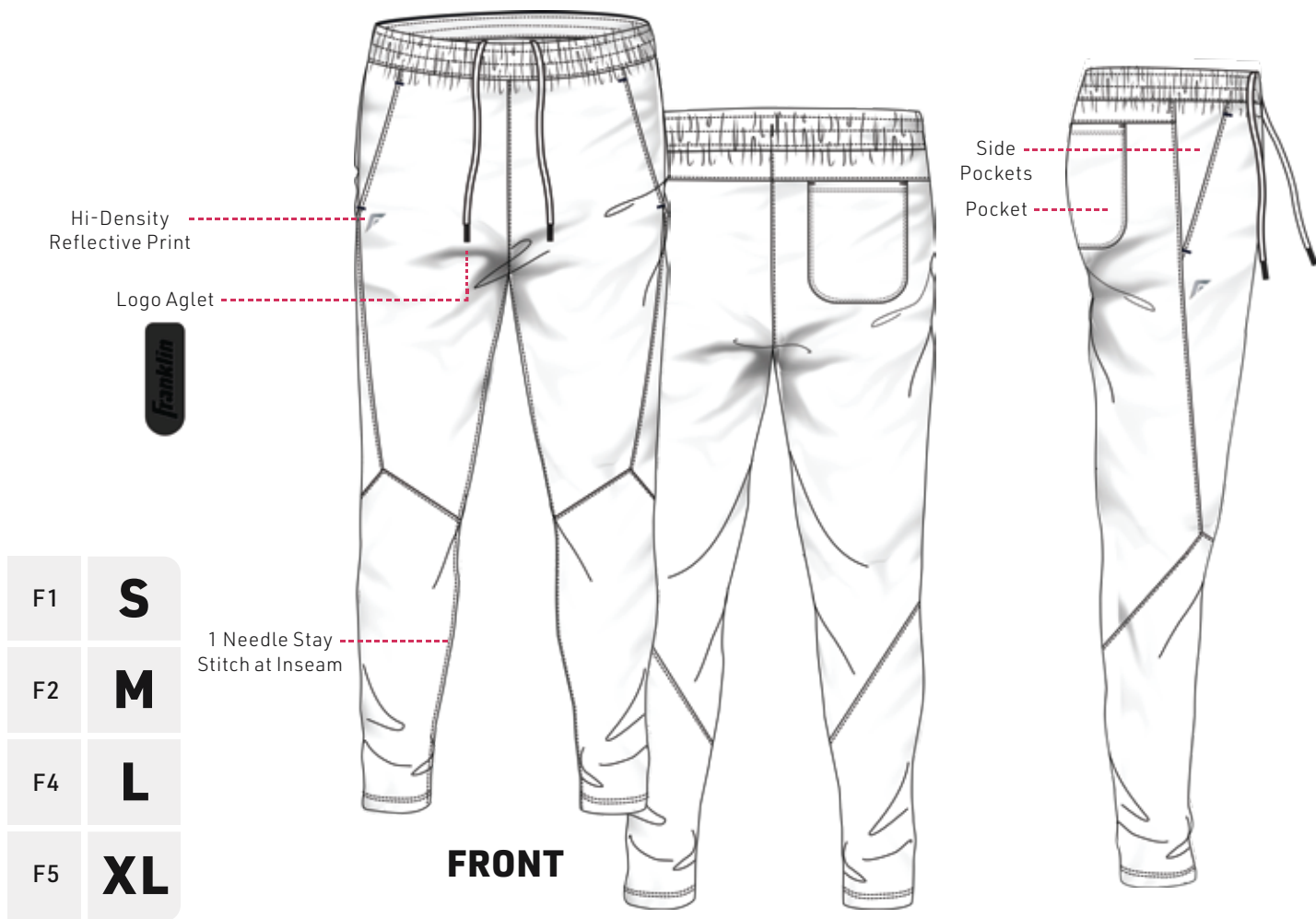
NAVY (19-3932TCX)

38606C1FX



MEN'S ENDURANCE JOGGERS

FABRIC: 73% POLYESTER 27% SPANDEX 270GSM W/ MOISTURE WICKING



BLACK

BLACK (19-4203TCX)
38607C1FX





MEN'S LT. WEIGHT HOODIE

JERSEY: 88% POLYESTER 12% SPANDEX. 190GSM. W/ WICKING, SOFT HAND FEEL





ETHER



CORNFLOWER

F1	S
F2	M
F4	L
F5	XL



CHARCOAL HTR

ETHER (14-4506TCX)
38604C1FX



CORNFLOWER (16-4031TCX)
38604C2FX

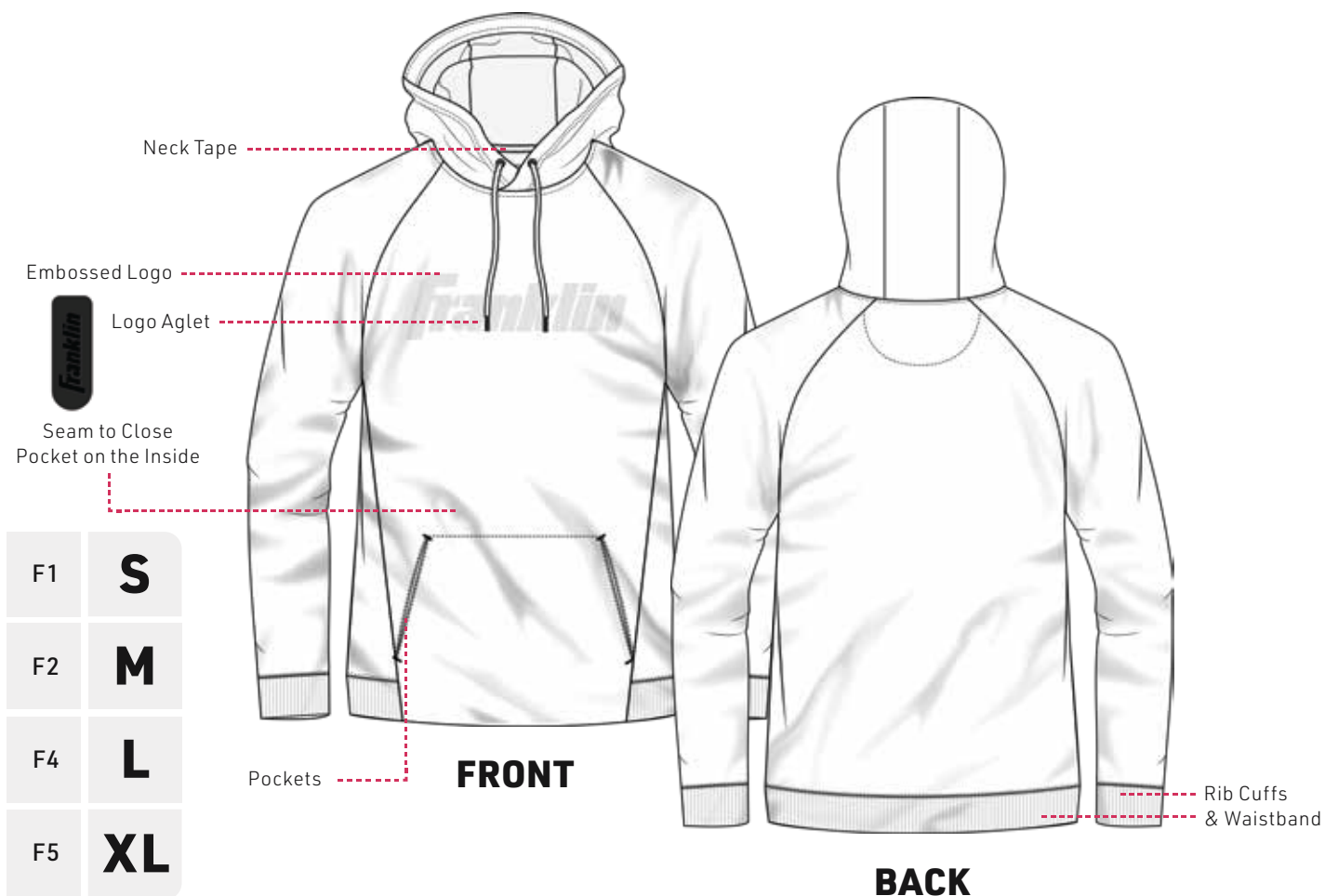


CHARCOAL HTR
38604C3FX



MEN'S MID-WEIGHT DEBOSSSED HOODIE

64% COTTON 36% POLYESTER JERSEY. 280 GSM. W/ BRUSHED BACK & ANTIPILL FLEECE BACK.



NAVY



OATMEAL HTR

NAVY
38618C1FX



OATMEAL HTR
38618C2FX





APPAREL 2025

CORPORATE HEADQUARTERS
17 CAMPANELLI PARKWAY
STOUGHTON, MA 02072

PHONE: 781-344-1111
FAX: 781-341-0333
EMAIL: B2B@FRANKLINSPO RTS.COM

Franklin

FRANKLINSPO RTS.COM/B2B



 **SKYLAR ERNA**
3.5 PICKLEBALL PLAYER
Women's Active Performance Top

 **JAHDEY WRIGHT**
3.5 PICKLEBALL PLAYER
Men's Mid-Weight Debossed Hoodie