

### Step 4

Once frame is completed, attach bungees part (4) to net in sequence shown in diagram #4.

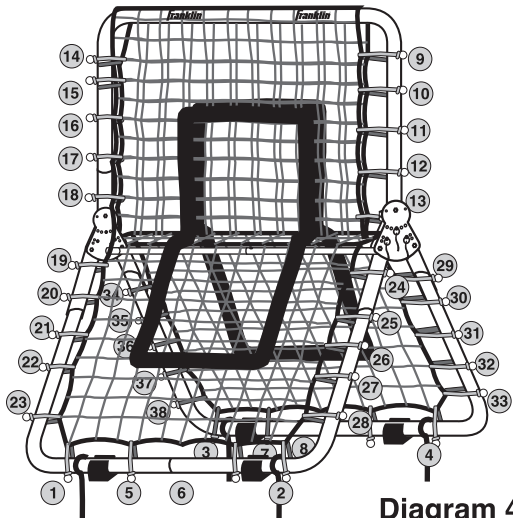
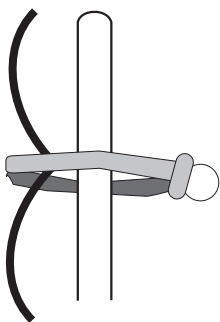


Diagram 4

### Step 5

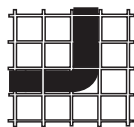
To attach bungees to net:  
Hold plastic ball in place and wrap free end around net and side tube. Loop free bungee end around plastic ball.



### Step 6

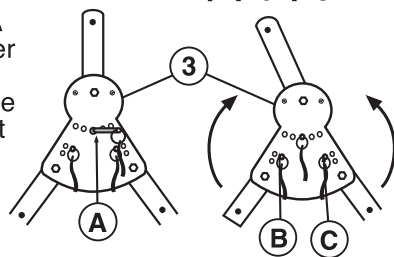
Attach target ribbon to net by weaving as shown in diagram #6. Target ribbon should be positioned in center of net and should be 18 net squares high by 12 net squares wide.

Diagram 5



### Step 7

To adjust angle of rebounder, remove pin A from part (3) on both sides, place rebounder at desired angle, and re-insert pins.  
(CAUTION: Be careful when changing angle – the poles move when locking pins are not in place)

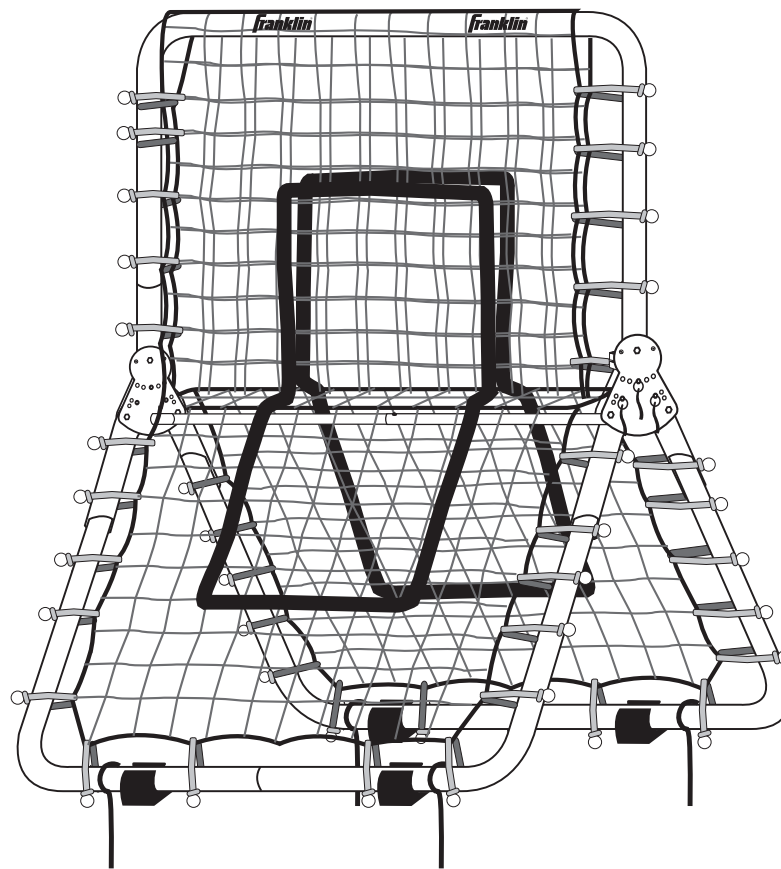


### Step 7

To fold flat, remove pins B and C from part (3) on both sides of the rebounder, fold legs up and re-insert pins.

# Franklin®

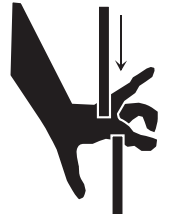
## ITEM# 24805 ASSEMBLY INSTRUCTIONS



Franklin Sports Inc. • Stoughton, MA 02072 • Made in China

For Replacement Parts Call 1-800-225-8649

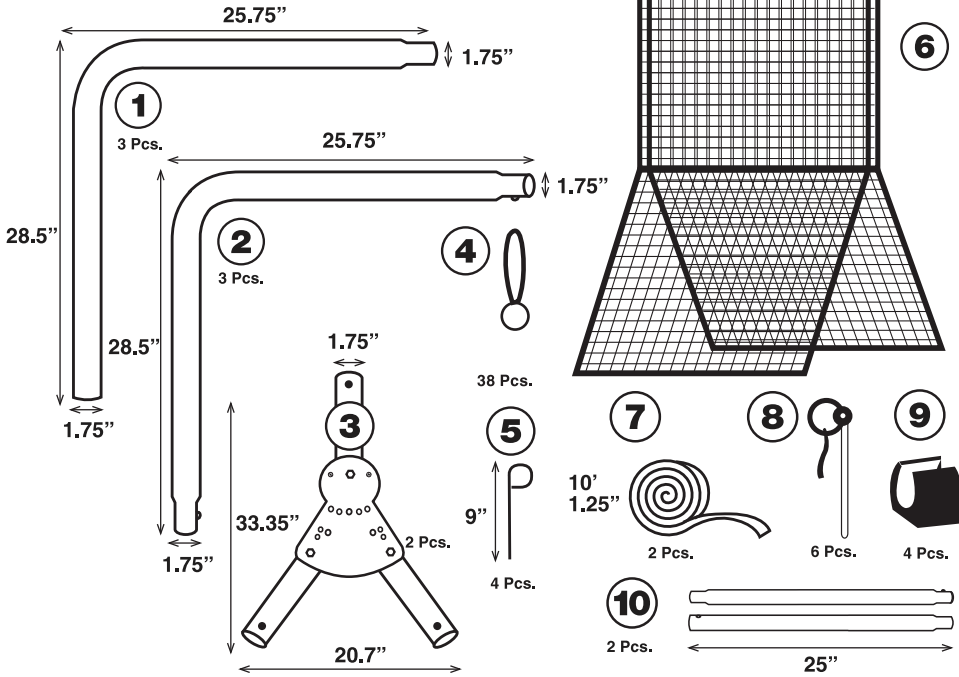
MA Residents Call 1-781-341-5178 or visit [www.franklinsports.com](http://www.franklinsports.com)



**⚠ CAUTION**  
**PINCH POINT** – Keep fingers clear of this area at all times. Failure to observe this warning may result in loss of fingers or other serious injury. Only adjust hinges under full adult supervision. Net is under tension which may cause a rapid and unexpected change in the angle of both the hinge and tubing.  
**KEEP FINGERS CLEAR AT ALL TIMES.**

**⚠ CAUTION:**  
**ADULT ASSEMBLY REQUIRED.**

# PARTS LIST



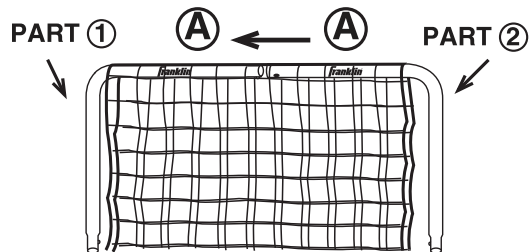
## Replacement Parts

Part	Amount	Description	Replacement Part #
1	3 pcs	Corner Tube	24805-R1
2	3 pcs	Corner Tube	24805-R2
3	2 pcs	Hinge Mechanism	24805-R3
4	38 pcs	Bungees	1056Z4
5	4 pcs	Ground Stakes	2738Z3
6	1 pc	Net	2738Z4
8	6 pcs	Hinge Pins	2738Z2
9	4 pcs	Blocks	
10	2 pcs	Support Tubes	24805-R4

## Step 1

Make three “U” shapes with tubing by placing part (1) into part (2). Make sure the end of part (2) with the letter “A” sticker is placed into part (1) with the letter “A” sticker. Note: One of each part (1) and (2) has a Franklin sticker, these should be assembled together to form the top of the pitchback. After you assemble part (1) and part (2) with Franklin stickers, slide the tubing through the top of the net.

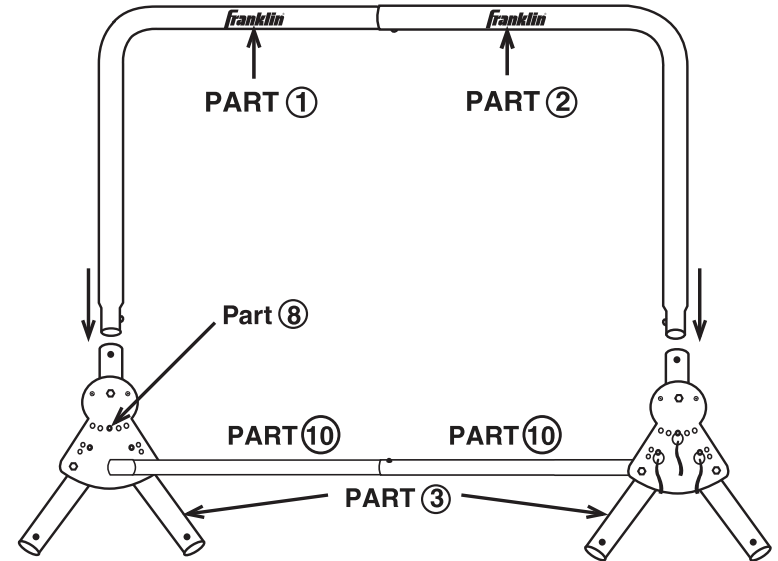
## Diagram 1



## Step 2

Place 6 locking pins (8) into part (3) to lock hinge in place. Now place top “U” shape into part (3). See diagram #2. Then secure part (10) to other part (10). Place part (10) in both ends of part (3) to secure frame.

## Diagram 2



## Step 3

Assemble both remaining “U” shaped bottoms as shown below. Be sure ground stakes part (5), and blocks part (9) are properly placed as shown in diagram #3.

## Diagram 3

