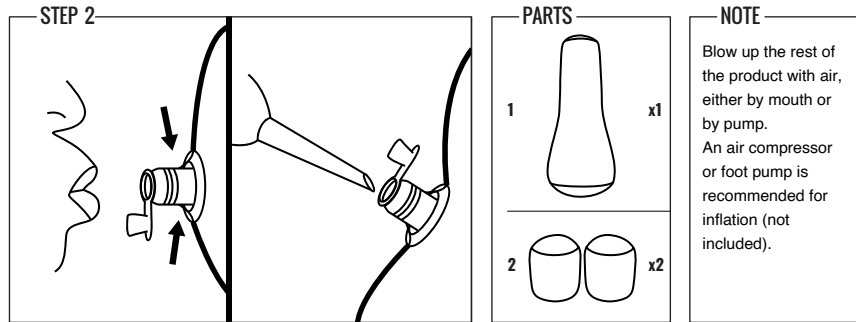


ASSEMBLY INSTRUCTIONS



NOTE

Blow up the rest of the product with air, either by mouth or by pump. An air compressor or foot pump is recommended for inflation (not included).

INFLATION:

To inflate using your mouth - Unplug the air valve plug and pinch the bottom of the inflation valve to release the inner flap. A small opening will be created allowing air to flow.

To inflate using an air compressor or foot pump - Unplug the air valve plug and pinch the bottom of the inflation valve to release the inner flap. Insert the needle past the inner flap and inflate accordingly.

Once the product is inflated, close the air valve plug to keep the air inside.

YOU ARE NOW READY TO PLAY!

Made In China
Franklin Sports Inc.
Stoughton, MA 02072

Franklin

For replacement parts:
Visit: franklinsports.com/instructions
Email: parts@franklinsports.com
Call: 1-800-225-8649

Ages 3+

Franklin®

FUTURE
***CHAMPS®

PUNCHING BAG AND GLOVES

ITEM NUMBER: **60176** **60176S21**



WARNING:
CHOKING HAZARD--Small parts.
Not for children under 3 yrs.

WARNING:
Keep away from sharp objects that could cause damage. Keep away from heated surfaces. Use on clean, smooth surface. DO NOT OVER-INFLATE.

NOTE: PRINT FRONT TO BACK

Franklin®

CUSTOMER SERVICE COMMITMENT

Thank you for purchasing this Franklin® product! In the event that the product you've purchased has missing or damaged parts, please contact us at:

parts@franklinsports.com

or

Visit our website at: **franklinsports.com/instructions**

If possible, please include product part number and parts description so we can best assist you.

WE'RE HERE FOR YOU!

PLEASE DO NOT RETURN THIS PRODUCT TO THE STORE IT WAS PURCHASED FROM.

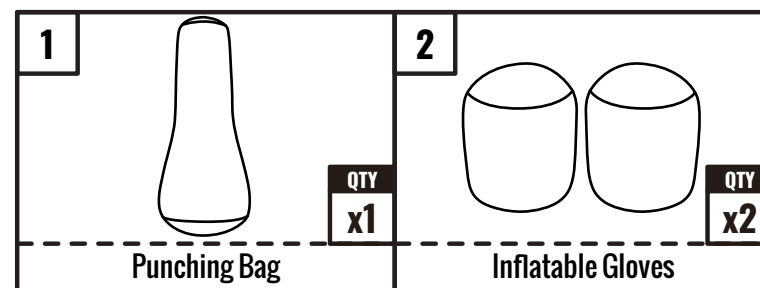
WE ARE COMMITTED TO FULFILLING ALL REPLACEMENT PART NEEDS IMMEDIATELY.

Thank you for your continued support, and welcome to the #FranklinFamily!

Franklin® ITEM#: **60176** **60176S21** 1

For replacement parts:
Visit: franklinsports.com/instructions
Email: parts@franklinsports.com
Call: 1-800-225-8649

PARTS LIST

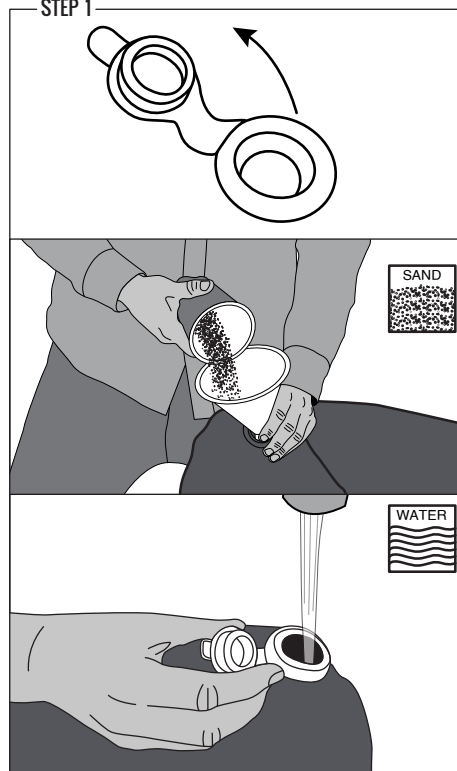


ASSEMBLY INSTRUCTIONS

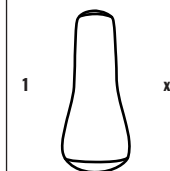
GENERAL NOTE

Remove the product from the box and make sure all of the parts from the parts list are included.

STEP 1



PARTS



IMPORTANT! FILL THE BASE BEFORE INFLATING!

NOTE

Fill the base of the Punching Bag (#1) with water or sand. Make sure this is completely filled! If filled partially, your Punching Bag will not stand up properly.

Once done filling, close the valve completely & securely.

Franklin® ITEM#: **60176** **60176S21** 2

For replacement parts:
Visit: franklinsports.com/instructions
Email: parts@franklinsports.com
Call: 1-800-225-8649