

Franklin®

FUTURE
***CHAMPS®

ELECTRONIC BOXING

ITEM NUMBER: **60184** **60184S11** **60184X**



WARNING:
CHOKING HAZARD--Small parts.
Not for children under 3 yrs.

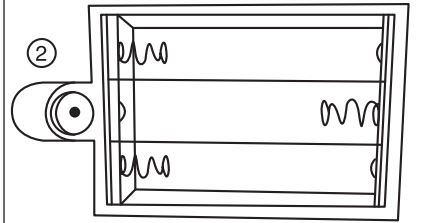
WARNING:
Keep away from sharp objects that could cause damage.
Keep away from heated surfaces. Use on clean, smooth surface. Do not over inflate.

FOR INDOOR USE ONLY

INFLATION:

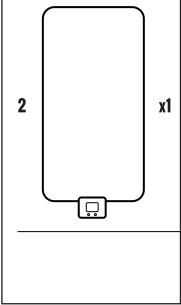
To inflate using your mouth - Unplug the air valve plug and pinch the bottom of the inflation valve to release the inner flap. A small opening will be created allowing air to flow.
To inflate using an air compressor or foot pump - Unplug the air valve plug and pinch the bottom of the inflation valve to release the inner flap. Insert the needle past the inner flap and inflate accordingly.
Once the product is inflated, close the air valve plug to keep the air inside.

STEP 3



Requires 3 "AAA" size batteries (not included).
Do not mix old and new batteries. Do not mix alkaline, standard (carbon-zinc), or rechargeable batteries.

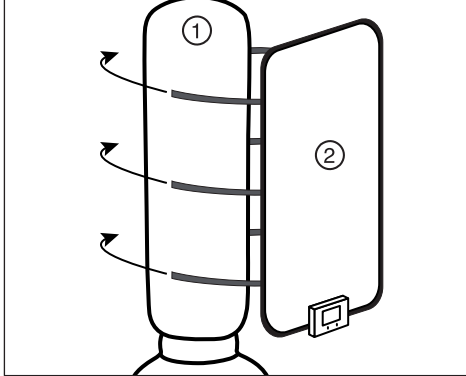
PARTS



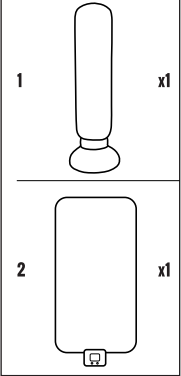
NOTE

On the back of the electronic unit, remove the screw from the battery compartment and insert batteries. Then, close the battery compartment.

STEP 3



PARTS



NOTE

Use the self-stick straps to wrap the **Electronic Cover** (#2) around the **Boxing Bag** (#1) securely.

YOU ARE NOW READY TO PLAY!

GAME INSTRUCTIONS:

- Press the On/Off button.
- Select game: Boxing or Kick Boxing, by using the select button, then press enter.
- Select speed: 1-3 by using the select button, then press enter.
- Select number of players: 1 or 2 by using the select button, then press enter.
- Select time: 1-5 minutes, by using the select button, then press enter.
- Press Start: hit the targets as they light up.
- When the time expires, the number of hits, misses, and your percentage will be revealed.
- To turn the game off, hold down the On/Off button.

Made In China
Franklin Sports Inc.
Stoughton, MA 02072



For replacement parts:
Visit: franklinsports.com/instructions
Email: parts@franklinsports.com
Call: 1-800-225-8649

NOTE: PRINT FRONT TO BACK

Franklin®

CUSTOMER SERVICE COMMITMENT

Thank you for purchasing this Franklin® product! In the event that the product you've purchased has missing or damaged parts, please contact us at:

parts@franklinsports.com

or

Visit our website at: **franklinsports.com/instructions**

If possible, please include product part number and parts description so we can best assist you.

WE'RE HERE FOR YOU!

PLEASE DO NOT RETURN THIS PRODUCT TO THE STORE IT WAS PURCHASED FROM.

WE ARE COMMITTED TO FULFILLING ALL REPLACEMENT PART NEEDS IMMEDIATELY.

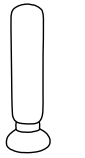
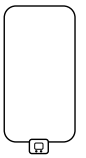
Thank you for your continued support, and welcome to the #FranklinFamily!

Franklin® ITEM#: **60184 60184X**
60184S11

1

For replacement parts:
Visit: franklinsports.com/instructions
Email: parts@franklinsports.com
Call: 1-800-225-8649

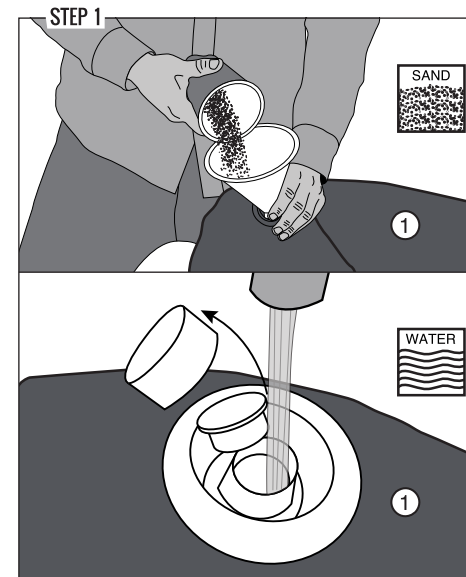
PARTS LIST

1		2	
	QTY x1		QTY x1
Punching Bag		Electronic Cover w/Game Unit	

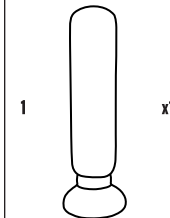
GENERAL NOTE

Remove the product from the box and make sure all of the parts from the parts list are included.

ASSEMBLY INSTRUCTIONS



PARTS

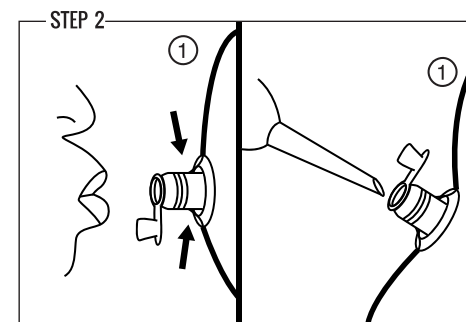


NOTE

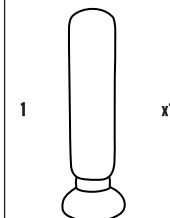
Fill the base of the **Punching Bag (#1)** with water or sand. Make sure this is completely filled! If filled partially, your Punching Bag will not stand up properly.

IMPORTANT! FILL THE BASE BEFORE INFLATING!

Once done filling, close the valve completely & securely.



PARTS



NOTE

Blow up the rest of the product with air, either by mouth or by pump. An air compressor or foot pump is recommended for inflation (not included).

Franklin® ITEM#: **60184 60184X**
60184S11

2

For replacement parts:
Visit: franklinsports.com/instructions
Email: parts@franklinsports.com
Call: 1-800-225-8649