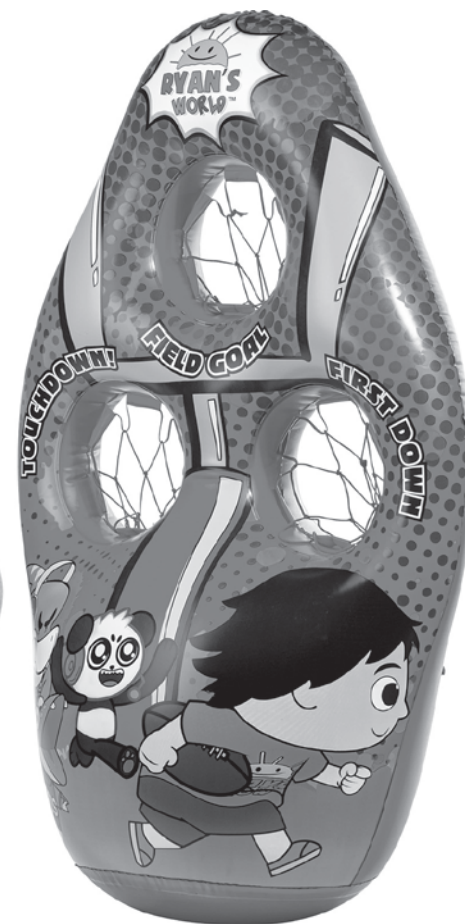


RYAN'S 3 HOLE FOOTBALL TARGET

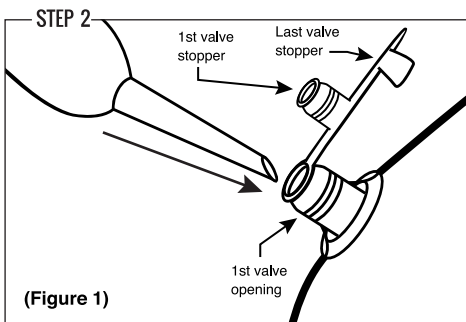
ITEM NUMBER: **89189**



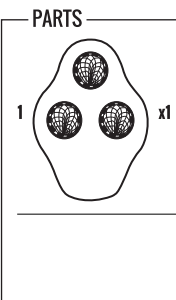
WARNING:
Do not over inflate. Do not use as flotation device. Keep away from fire. Store in dry climate.

WARNING:
CHOKING HAZARD--Small parts. Not for children under 3 yrs.

NOTE: PRINT FRONT TO BACK



(Figure 1)



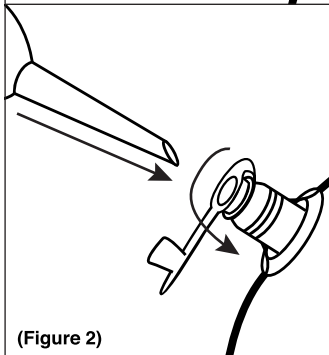
NOTE

An air compressor or foot pump is recommended for inflation (not included).

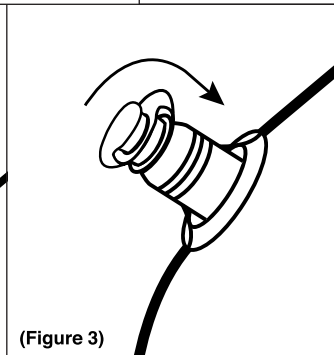
FIGURE 1: Start by filling the target with air through the 1st valve opening so that your target is roughly 70-80% filled.

FIGURE 2: Plug the 1st valve opening with the 1st valve stopper and finish inflating.

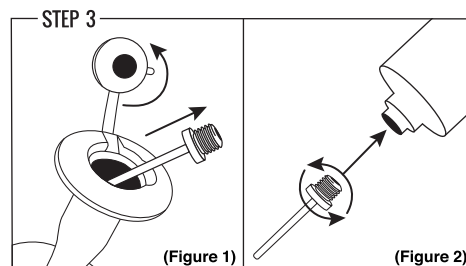
FIGURE 3: Once you have reached max inflation, plug the final valve stopper into the 1st valve stopper so that your air valve is completely sealed.



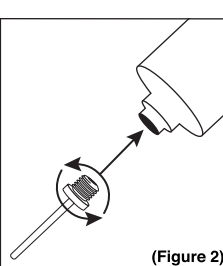
(Figure 2)



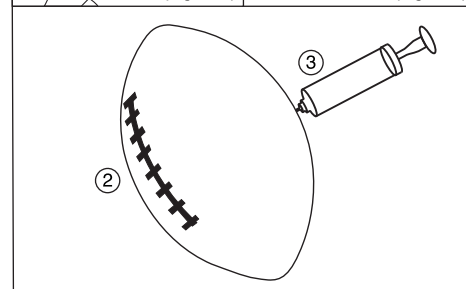
(Figure 3)



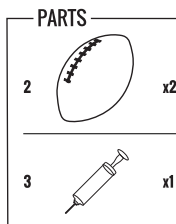
(Figure 1)



(Figure 2)



2



2

x2



3

x1

NOTE

Inflate your Football (2) using the Inflation Pump with Needle (3) that's included.

To find the needle in the pump, simply open the top cap as shown (Figure 1), and screw into the bottom of the pump (Figure 2).

YOU ARE NOW READY TO PLAY!

Made In China
Franklin Sports Inc.
Stoughton, MA 02072



For replacement parts:
Visit: www.franklinsports.com/89189
Email: parts@franklinsports.com
Call: 1-800-225-8649



CUSTOMER SERVICE COMMITMENT

Thank you for purchasing this product! In the event that the product you've purchased has missing or damaged parts, please contact us at:

parts@franklinsports.com

or

Visit our website at: **www.franklinsports.com/89189**

If possible, please include product part number and parts description so we can best assist you.

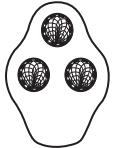


WE'RE HERE FOR YOU!

PLEASE DO NOT RETURN THIS PRODUCT TO THE STORE IT WAS PURCHASED FROM.

WE ARE COMMITTED TO FULFILLING ALL REPLACEMENT PART NEEDS IMMEDIATELY.

Thank you for your continued support, and welcome to the #FranklinFamily!

PARTS LIST

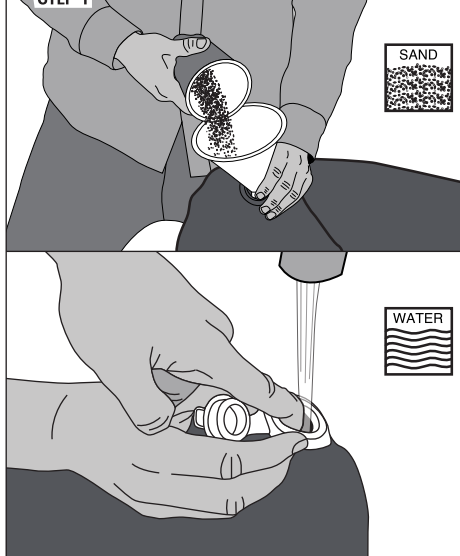
<p>1</p>  <p>QTY x1</p> <p>Inflatable Target</p>	<p>2</p>  <p>QTY x2</p> <p>Footballs</p>	<p>3</p>  <p>QTY x1</p> <p>Inflation Pump and Needle</p>
--	--	--

ASSEMBLY INSTRUCTIONS

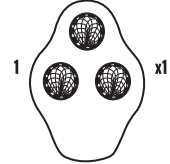
GENERAL NOTE

Remove the product from the box and make sure all of the parts from the parts list are included.

STEP 1



PARTS



1 x1

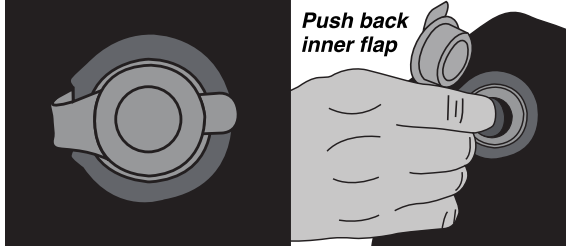
IMPORTANT! FILL THE BASE BEFORE INFLATING!

The bottom valve has a flap that keeps all sand or water inside the base. This inner flap must be pushed to the side to allow the water or sand to get into the base properly.

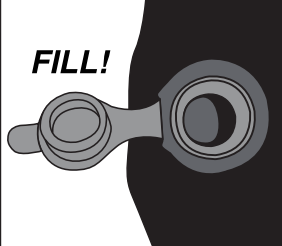
NOTE

Fill the base of the **Inflatable Target (#1)** with sand or water. Make sure this is completely filled! If filled partially, then your target will not stand up properly.

Once done filling, simply allow the flap to settle back into place and close the valve completely & securely.



Push back inner flap



FILL!