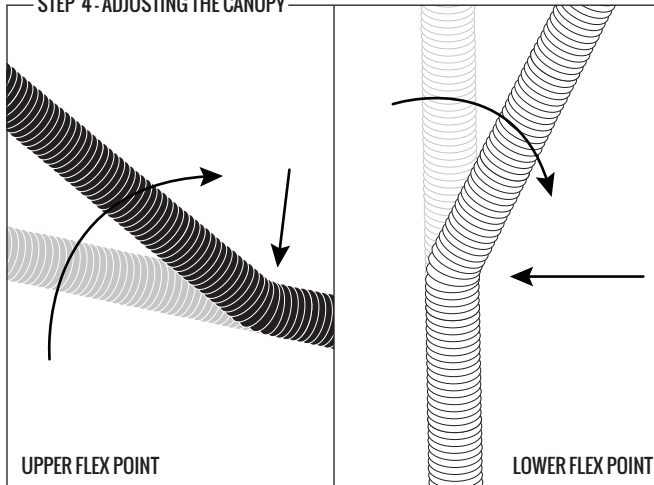


STEP 4 - ADJUSTING THE CANOPY



NOTE

This umbrella has two flex points that allows you to adjust the angle of the umbrella. Simply hold and bend to the desired position.

CARE & STORAGE:

Make sure the BRELLA-TEK™ umbrella is dry and clean before packing and storing. Use mild detergent to spot clean the umbrella.

Made In China
Franklin Sports Inc.
Stoughton, MA 02072

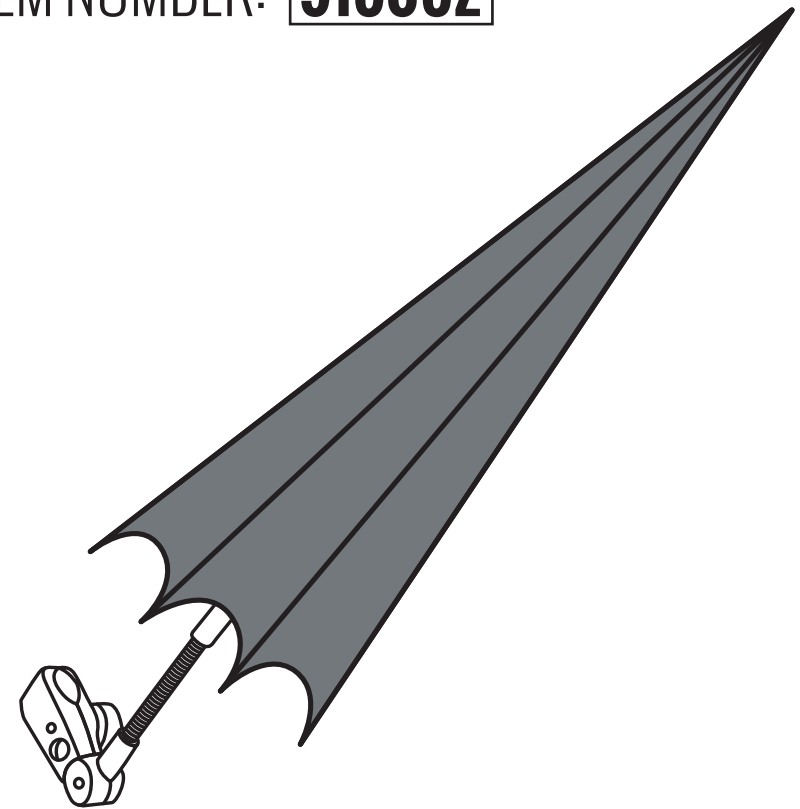


For replacement parts:
Visit: www.franklinsports.com/91505Z
Email: parts@franklinsports.com
Call: 1-800-225-8649



BRELLA-TEK™ AUTOMATIC
UMBRELLA

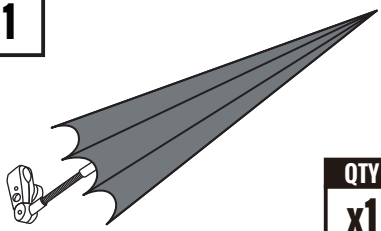
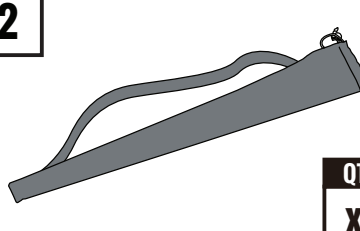
ITEM NUMBER: **91505Z**



CAUTION:
PINCH HAZARD! KEEP HANDS CLEAR.

NOTE: PRINT FRONT TO BACK

PARTS LIST

1  QTY x1	2  QTY x1
Umbrella Rep. Part: N/A	Case Rep. Part: N/A

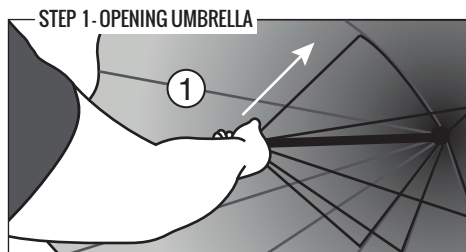
ASSEMBLY INSTRUCTIONS

GENERAL NOTES

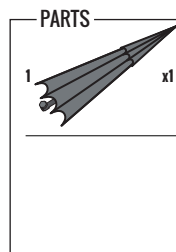
Read all the set up and usage instructions before use. If the instructions are not followed correctly, injury or damage to the product may result.

Always inspect equipment for worn or damage before each use. If defects are found please do not use.

Review your product to ensure all components are received. Please contact customer service if you are missing anything.

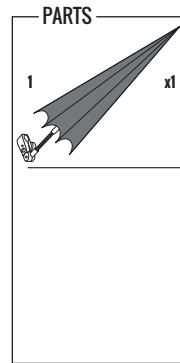
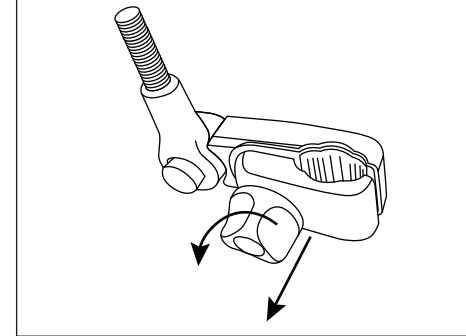


STEP 1 - OPENING UMBRELLA



NOTE
 Remove umbrella from case. Release the self stick strap. Open the SIDELINE SUNBLOCKER™ by pressing the automatic button, releasing umbrella until fully extended.

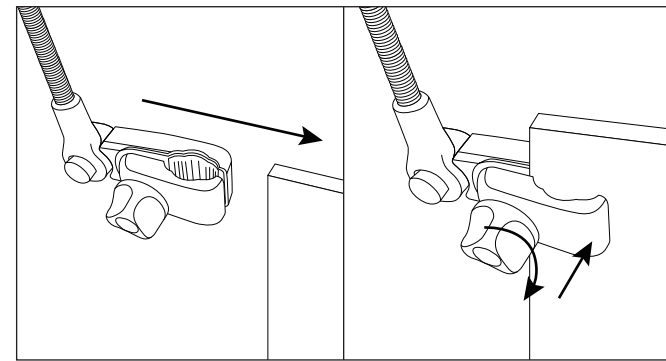
STEP 2 - ATTACHING THE CLAMP



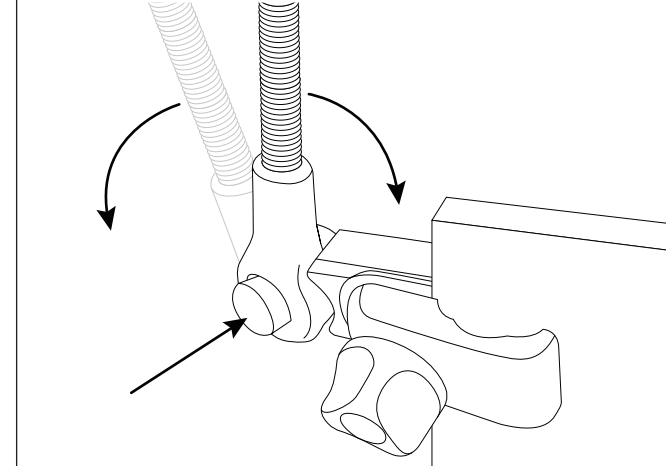
NOTE
 The BRELLA-TEK™ umbrella will attach to either a round or square surface up to 1.5in (3.8cm) diameter; such as chairs, tables, etc. Prior to attaching, fully open the clamp by twisting the adjustment knob counter clockwise.

Attach the clamp to the desired location and tighten by twisting clockwise. Make sure the area is clean and dry to ensure a secure fit.

Once attached open the umbrella.



STEP 3 - ADJUSTING BASE HINGE



NOTE
 The umbrella can be adjusted forward or back by pressing the button on the base clamp. Press and rotate to the desired position and release. The umbrella will lock to the closest setting.